



WEF Collaboration – Moderated Panel

Collaboration Between State Lines

Kristin Johansen, PE, CWP

Rocky Mountain Water Environment Association

Albuquerque Bernalillo County Water Utility Authority

Chili or Chile? Red or Green?

Chugwater Chili Cook-off: Wyoming's spiciest hometown event



Why This New Mexico Chile Has an International Cult Following

Impossible to mass produce, the Chimayó chile is so precious that a counterfeit market has emerged.

By [Charu Suri](#) | Updated on December 26, 2022



Question: How do MAs effectively bridge differences between states to work together, engage members, and achieve common missions and goals?

Differences Between State Memberships

- Geographic – Location, environmental factors
- Population/ Demographics – Where do most members live?
- Resources – Financial, expertise, volunteers, technology
- Regulatory – Each state has unique regulatory framework
- Cultural – Communication styles, views on water resources, language, traditions, etc.
- Other?

Collaboration Fundamentals

1. Identify common ground
2. Focus on the big picture and the why
3. Check assumptions at the door
4. Be committed to results, rather than specific solutions
5. Be curious
6. Ask more, assert less
7. Inclusivity is key
8. Listen

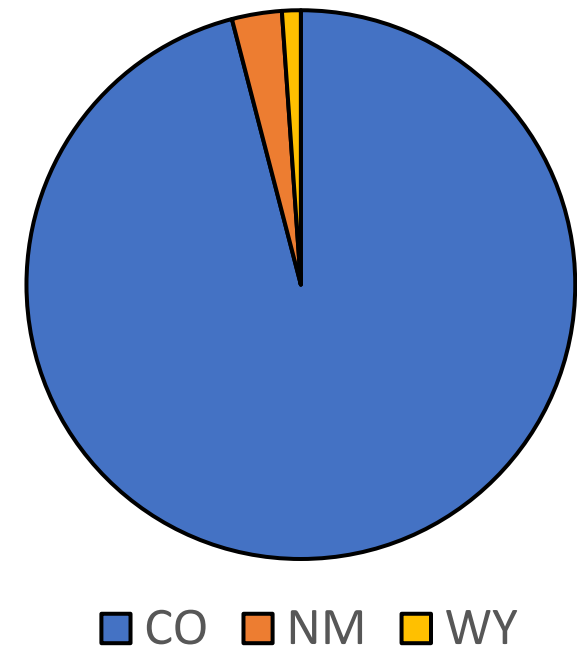
RMWEA Perspective



Rocky Mountain Water
Environment Association
Elevating Water Professionals

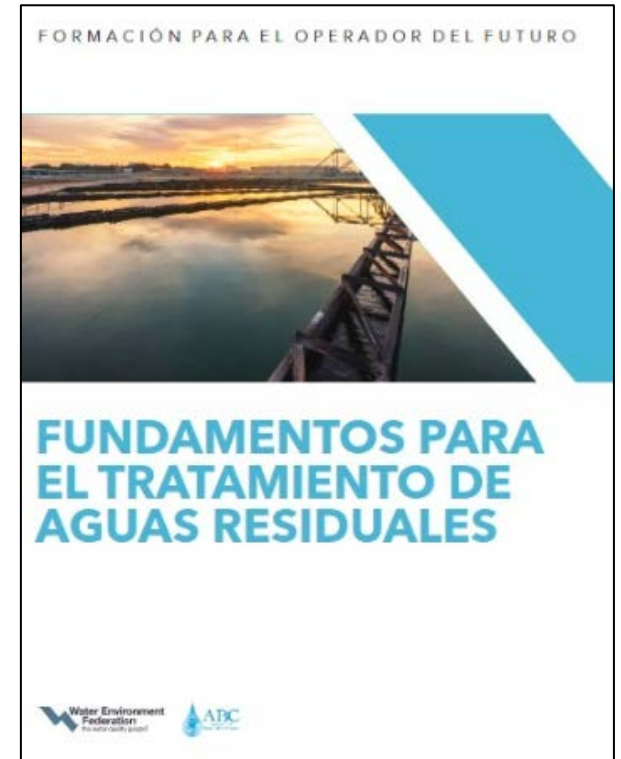
- Develop a mission statement
- Prioritize inclusivity
- Share resources
- Be willing to ask and listen
- Engage students & YPs
- Assign liaisons

RMWEA Membership



RMWEA Lessons Learned

- Don't force collaboration
- Decentralized engagement works
- Consider partnership opportunities
- Respect differences
- "Gumbo diplomacy"



SAVE THE DATE!

New Mexico
.....
WATER WORKSHOP

April 20th-21st

2023

Hotel Albuquerque at
Old Town
Albuquerque, NM

American Water Works Association
Rocky Mountain Section

Questions?

Contact:

Kristin Johansen, PE, CWP

kjohansen@abcwua.org



THANK YOU FOR YOUR PARTICIPATION

Panel Discussion Time

MA Collaboration and Partnerships

HOD Nominating Committee Update

Leanne Scott

Lunch

- Change tables
- Find your assigned mentor/mentee
- Review Action Plan worksheets

WEF Topics

WEF Panel

- **Why was collaboration selected as a Core Value?** – Howard Carter (WEF)
- **Collaboration and Inclusion – 5S** – Jeff Berlin for Nikita Lingenfelter
- **Leadership Development Institute Collaboration** – Craig Williams (IWEA)
- **WEF SYPC** – Ama Richardson (WEF)
- **DE&I Network Call** – Donnell Duncan (Speaker of the House)

WEF Strategic Plan

Our Mission

Inspiring the water community in pursuit of human and environmental well-being

Our Vision

Life free of water challenges

Our Three-Year Outcome Statement

Amplify the stories of water to grow, strengthen, and diversify the water community

Our Strategic Goals

Goal 1: Attract and develop a diverse and passionate water workforce

Goal 2: Cultivate a purpose-driven community to sustainably solve water challenges for all

Goal 3: Lead the transformation to the Circular Water Economy

Our Core Values

- + Lead boldly with purpose and agility
- + Focus on our customers through empathy and service
- + Collaborate for collective impact
- + Integrate Diversity, Equity, and Inclusion in all we do



Our Core Values



Lead boldly with purpose and agility



Focus on our **customers** through **empathy and service**



Collaborate for collective impact



Integrate **Diversity, Equity, and Inclusion** in all we do

Collaboration and Inclusion – 5S

Select Society of Sanitary Sludge Shovelers – 5S

- A professional acknowledgement of your contributions to the industry and the organization
- Something closer to fraternity hazing



Our Core Values



Lead boldly with purpose and agility



Focus on our customers through **empathy and service**



Collaborate for collective impact



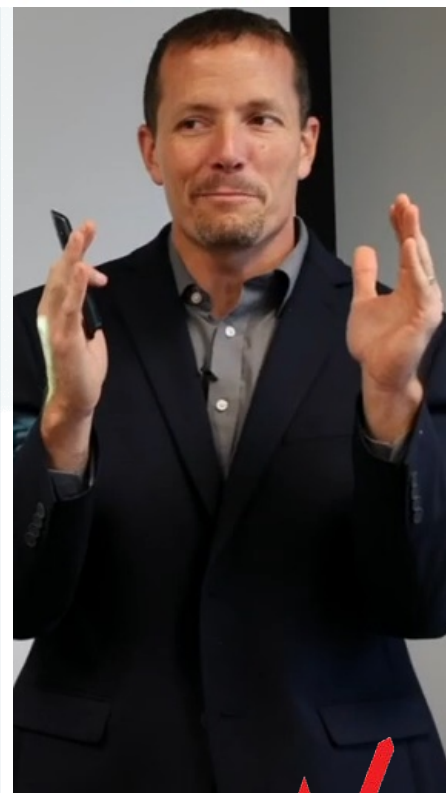
Integrate **Diversity, Equity, and Inclusion** in all we do

Key Thoughts on 5S

- This is a ceremony to bestow an honor
 - No matter how old a tradition is, we can question and reassess
 - Be cognizant of how a person might feel if they are singled out
 - Compare our honoring ceremonies to our core values
-
- Is it time to update your ceremony?

LEADERSHIP DEVELOPMENT INSTITUTE

CULTIVATING LEADERS FOR THE FUTURE OF WATER



DEVELOPING TODAY'S LEADERS
INSPIRING TOMORROW'S

IWEA LDI Curriculum Overview

- Module 1 **Self-Leadership** – understanding and leading ourselves
- Module 2 **Leadership** – influencing others
- Module 3 **Teamwork** – principles for leading and building teams
- Module 4 **Organizational Planning** – clarifying the purpose of your team/organization
- Module 5 **Human Resources** – techniques and terms related to leading people
- Module 6 **Internal and Interpersonal Communication** – connecting techniques and tactics
- Module 7 **External Communication**– communication to the community
- Module 8 **Finance and Business**– foundational principles of finance for leaders
- Module 9 **Developing Leaders & Succession**– principles for developing leaders
- Module 10 **Course Summary and Presentations**

IWEA LDI Curriculum Overview

- Module 1 **Self-Leadership** – understanding and leading ourselves
- Module 2 **Leadership** – influencing others
- Module 3 **Teamwork** – principles for leading and building teams
- Module 4 **Organizational Planning** – clarifying the purpose of your team/organization
- Module 5 **Human Resources** – techniques and terms related to leading people
- Module 6 **Internal and Interpersonal Communication** – connecting techniques and tactics
- Module 7 **External Communication**– communication to the community
- Module 8 **Finance and Business**– foundational principles of finance for leaders
- Module 9 **Developing Leaders & Succession**– principles for developing leaders
- Module 10 **Course Summary and Presentations**

<https://youtu.be/qVczTD8pm6k>



Questions



WEF STUDENTS AND YOUNG PROFESSIONALS COMMUNITY (SYPC) – COLLABORATION



Ama Richardson
WEF

Sr. Manager, Association Engagement
(Young Professionals)



AGENDA

National Water Policy Fly-In

WEF/AWWA YP Summit



SYPC Mission

The mission of WEF's Students and Young Professionals Community (SYPC) is to encourage and facilitate student and young professional involvement in WEF and Member Associations through professional development and leadership opportunities. The SYPC is made up of students, young professionals, academics, and water quality professionals.

WEF/AWWA YP Summit

Mission

- Attendees learn about emerging issues in our industry and connect with a diverse group of water industry peers.
- Program challenges attendees to think critically about our industry (present and future) and to establish lasting connections with peers.

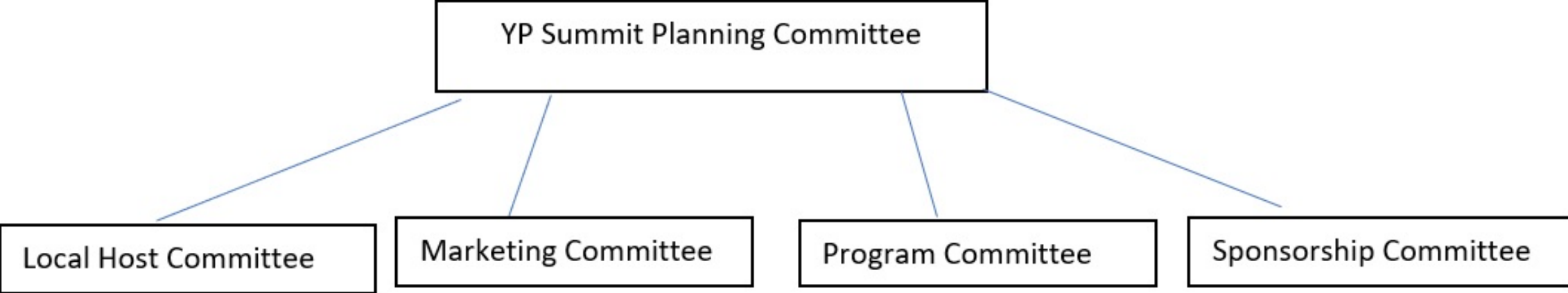
Collaboration

- Co-hosted by WEF and AWWA each year.
- WEF hosts the Summit in even years, while AWWA hosts in odd years.
- Both organizations (staff and YPs) work collaboratively to ensure a successful event.
- Established in 2005 at WEFMAX in D.C. 50 attendees participated.
- Approximately 230 attendees at the 2023 Summit in Sacramento.

Attendees

- YPs from all types of vocational backgrounds attend YP Summit:
 - utility operators
 - engineering consultants
 - vendor representatives
 - municipal employees
 - representatives from both research and permitting agencies
 - finance consultants
 - water industry professionals from administration and field work to project management and design.

Committee Structure



YP SUMMIT

National Water Policy Fly-In

Mission

- An excellent opportunity for YPs (and all WEF members) to participate in the highest levels of policy advocacy before Congress and the Administration.
- Attendees build professional connections with water professionals from across the nation also attending the National Water Policy Fly-In.

Collaboration

- Co-hosted by WEF, the National Association of Clean Water Agencies, the Water Research Foundation, and the WaterReuse Association.
- The Fly-In is part of Water Week, during which hundreds of water professionals from across the nation will come to Washington, D.C.
- Program began in 2018.

Attendees

- WEF is the only organization that provides scholarships to its YP members to attend.
 - There were 7 YP scholarship recipients in 2018.
 - In 2023, 20+ YPs applied for the WEF scholarship.
- Testimonials

WEF Collaboration – DE&I Network Call

By Donnell Duncan
WEF House of Delegates

THANK YOU FOR YOUR PARTICIPATION

Panel Discussion Time

WEF Collaboration

BREAK

Modified World Café Method

Call to Action : Brainstorm ideas to resolve identified hurdles

- Demo and split into groups – 5 minutes
- Each group gets time to provide solutions for each hurdle – 6 minutes
- Move to next topic and provide solutions – 1 minute

- Table host report outs – 2 minutes each

Next Steps – Action Plan

Action Plan Worksheet



Day 1

Wrap - Up